

SHELF
LIFE
STUDY

CHEMICAL
ANALYSIS

ENVIRONMENTAL
TESTING

AMBIENT AIR
QUALITY
TESTING

DOP
TESTING

MICROBIOLOGICAL
ANALYSIS

IAQ
TESTING

RELIABLE
Testing Laboratory



RELIABLE ALWAYS





INTRODUCTION

Reliable Testing Laboratory (RTL) was established with a clear mission to provide customers with a dependable and reliable service experience unmatched in this region. As the name suggests Reliable stands for accuracy of results and dependable, hassle-free service. At Reliable Testing Laboratory, we reckon the value of time and understand that our valued customers need their time to focus on the core business activities to maximize their own customer satisfaction and bottom lines. Reliable Testing

Laboratory guarantee our customers, by partnering with RTL, they will not be required to spare time to follow up on the processes of sampling, testing and reporting. Customers requiring regular service can sign up a contract with the required frequency and leave the rest to the efficient team at Reliable Testing Laboratory.

Accuracy of results is guaranteed at Reliable Testing Laboratory by a combination of competent, qualified and experienced personnel; hi-tech and premium brand of test equipment and instruments; implementing and maintaining a DAC certified Quality Management System in accordance with ISO 17025, a well formulated proficiency testing programme, staff training, and continuous improvement of the system through various means including customer feedback. At Reliable Testing Laboratory, all the processes are efficiently mapped and intermittent quality checks are carried out at each stage of the testing processes. Reliable Testing Laboratory caters to the testing needs of various customer groups such as oil companies, hotels, facility management companies, restaurants, offices, industrial facilities, importers and exporters and residential customers. Reliable Testing Laboratory specialises in microbiology testing of water, food and air, chemical testing of water, air quality test for ambient air and indoor environments, asbestos bulk tests and air samples, DOP and clean room testing and many others.





MICROBIOLOGY LAB

Reliable Testing Laboratory carries out Microbiology tests for Food, Water and Air. Reliable Testing Laboratory understands the requirement of Dubai Municipality and customers can request quotations for standard sets of tests

grouped on the Municipality requirements for Air, Water, and Food. Offers are also available for individual parameters. RTL also offers standard sets of tests for other Municipalities in U.A.E for Air, Water and Food.

- Total Aerobic plate count
- Fecal coliforms
- Salmonella
- Clostridium sp
- E.coli o157
- Vibrio parahaemolyticus
- Enterobacteriaceae
- Pseudomonas aeruginosa
- Total Coliforms
- E.coli
- Staphylococcus aureus
- Listeria sp
- Bacillus cereus
- Yeast and mold (food /water)
- Legionella sp

> Food -Raw/Ready to eat-APHA,USFDA BAM & CMMEF Methods

- Total plate count
- E.coli
- Salmonella sp
- Staphylococcus aureus
- Bacillus cereus



> **Ready to eat sea food(DM) APHA,USFDA BAM & CMMEF Methods**

- Total plate count
- E.coli
- Salmonella
- Staphylococcus aureus
- Vibrio parahaemolyticus
- Bacillus cereus

> **Ready to eat without sea food(DM) APHA, USFDA BAM & CMMEF Methods**

- Total plate count
- E.coli
- Salmonella
- Staphylococcus aureus
- Bacillus cereus

> **Swab(Hand /surface) in food industry APHA, & CMMEF-Methods**

- Total plate count
- E.coli
- Total coliforms
- Staphylococcus aureus

> **Air/Swab for Environmental Assessment**

- Total bacterial count
- Total yeast and mold

> **Drinking/potable water as per WHO -APHA, USFDA BAM ,ISO & CMMEF Methods**

- Aerobic plate count
- Total coliforms
- Fecal coliforms
- E.coli
- Pseudomonas aeruginosa

> **Chiller Mater**

- Total bacterial count
- Total coliforms

> **Swimming Pool Water -APHA, USFDA BAM, ISO & CMMEF Method.**

- Heterotrophic plate count
- Total coliforms
- Fecal coliforms
- Fecal streptococci
- Pseudomonas aeruginosa

> **Water sample from Swimming Pool, Potable, Drinking , Shower, Chiller, etc-ISO Method**

- Legionella





Reliable Testing Laboratory carries out a wide range of tests in their Chemistry Lab. The Test List is given below for easy reference.

Potable/Drinking Water Test Parameter - APHA Method

- PH @ 25°C
- Electrical Conductivity
- Total Suspended Solids (TSS)
- Total Dissolved Solids (TDS)
- Chloride (Cl⁻)
- Sulphate (SO₄⁻)
- Nitrate (NO₃)
- Total Alkalinity
- Total Hardness (CaCO₃)
- Carbonate
- Bicarbonate (HCO₃)
- Sodium (Na)
- Potassium (K)
- Copper (Cu)
- Manganese (Mn)
- Zinc (Zn)
- Silica (SiO₂)
- Calcium (Ca)
- Magnesium (Mg)

Chiller Water Test Parameter - APHA Method

- PH @ 25°C
- Total Suspended Solids (TSS)
- Total Dissolved Solids (TDS)
- Total Alkalinity
- Total Hardness (CaCO₃)
- Electrical Conductivity
- Dissolved Iron
- Chloride
- Nitrite as NaNO₂



IRRIGATION WATER TEST PARAMETER - APHA Method

- PH @ 25°C
- BOD
- COD
- NH3-N
- TSS
- TKN
- Mercury (Hg)

INDUSTRIAL EFFLUENT/ RAW SEWAGE/TREATED SEWAGE - APHA Method

- PH @ 25°C
- Electrical Conductivity
- Total Suspended Solids (TSS)
- Total Dissolved Solids (TDS)
- BOD
- COD
- Oil & Grease
- Sulfide
- Metals (Cd, Cr, Cu, Pb, Ni, Zn, Hg)



MARINE & GROUND WATER - APHA Method

- AMMONIA
- Biological Oxygen Demand (BOD)
- Chemical Oxygen Demand (COD)
- Chlorinated HydroCarbons
- Chloride
- Cyanide
- Dissolved Oxygen
- Fats, Oil & Grease
- PCBs
- Pesticides
- Phenols
- Phosphates
- Poly Aromatic Hydrocarbons (PAH)
- Volatile Organic Compounds
- Sulfide
- Total Nitrogen (NO₃-N, NO₂-N, N-Org,
- Total Organic Carbon (TOC)
- Total Petroleum Hydrocarbon (TPH)
- Total Suspended Solids (TSS)
- Turbidity





INDOOR AIR QUALITY

Reliable Testing Laboratory (RTL) offers Indoor Air Quality (IAQ) Tests in line with the local Green Building Standards and international IAQ standards. RTL can provide expert analytical, consultative and investigative services apart from reporting measurements. RTL works with experts in the industry to provide wholesome solutions to IAQ problems from investigative identification to remedial solutions. On-site tests offered are 8 hour TWA tests in compliance with Dubai Municipality Green Building Standards, and customer specific shorter duration tests. Standard tests cover Dust Particles, Temperature, RH, CO, CO₂, O₃, TVOC. Tests are also done for lx (Lux), CH₂O(Formaldehyde), and Noise.



Indoor Air Quality As per Dubai Green Building Guidelines

- PM10 Monitoring / Respirable
- Dust
- Formaldehyde
- Total Volatile Organic Compound
- Ozone
- Carbon Dioxide
- Carbon Monoxide
- Oxygen
- Temperature
- Relative Humidity
- Total Bacterial Count
- Total Fungal Count

* Customer specific tests for Lx (lux), noise etc are undertaken.

AMBIENT AIR QUALITY TESTING

Ambient Monitoring is the systematic, long-term assessment of pollutant levels by measuring the quantity and types of certain pollutants in the surrounding outdoor air. Emissions Measurement is the process of monitoring particulate and gaseous emissions from a specific source. Air quality monitoring is carried out to assess the extent of pollution, ensure compliance with national legislation, evaluate control options, and provide data for air quality modeling. There are different methods to measure any given pollutant, varying in complexity, reliability, and detail of data. Emissions Measurement is the science of characterizing and measuring air pollutant emissions. The measurement of both type and quantity of these contaminants is an important part of obtaining the data needed to implement a meaningful control program. The locations for monitoring stations depend on the purpose of the monitoring.

EPA has set national air quality standards for six common air pollutants (also called the criteria pollutants):

- Carbon monoxide (CO)
- Ozone (O₃),
- Lead (Pb)
- Nitrogen dioxide (NO₂)
- Particulate matter (PM)
- Sulfur dioxide (SO₂)





DOP TESTING

Reliable Testing Laboratory offers DOP (Dispersible Oil Particle) Test for HEPA filters using PAO (Poly Alpha Olefin) oil. DOP tests are carried out to check the integrity of the HEPA (High Efficiency Particulate Arrestor) filters.

Reliable Testing Laboratory offers both onsite and offsite tests for your HEPA filtered equipment. Our technicians use state of the art equipment and are well trained, certified and experienced. DOP testing is done using the safest procedures and conform to international standards. Reliable Testing Laboratory can also test for Clean Rooms.

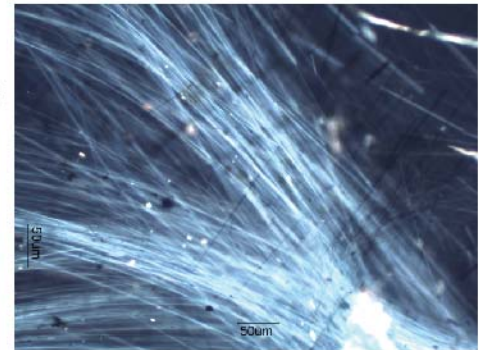
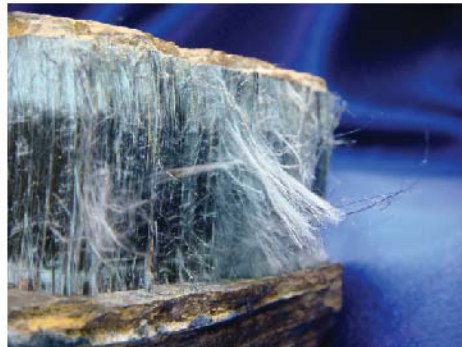
It's also recommended to test all LAF & biosafety cabinet in hospitals, research center, testing lab and Pharmaceutical company etc. To avoid contamination and false positive results .



ASBESTOS TESTING

Reliable Testing Laboratory is one of only a few laboratories in U.A.E that is capable of conducting asbestos analysis. Reliable Testing Laboratory is well equipped to do bulk as well as air analysis. The laboratory technicians are trained in the U.S.A and well experienced, having conducted several hundred tests in the last few years. Bulk analysis is primarily done using Polarised Light Microscopy (PLM). PLM differentiates asbestos from non-asbestos and further identifies the type of asbestos and the percentage of the type in the material analysed.

Air samples are analysed using Phase Contrast Microscopy (PCM). Using this method, fibers larger than 0.25 micron in diameter are counted and reported. The method used in the analysis is NIOSH 7400. Reliable Testing Laboratory can analyse back ground and clearance samples from Asbestos abatement projects.





Reliable Testing Laboratory L.L.C, P.O.Box : 211714, Dubai, U.A.E
Tel : +971 4 885 2022, Fax : +971 4 885 2033
Email: info@rtlab-intl.com, Website: www.rtlab-intl.com